

Marine Propulsion System

H32CP

Tier II, Tier III (with SCR)

Bore: 320mm, Stroke: 450mm

Controllable Pitch Propeller

Permit high skew angles to minimize noise and vibration.

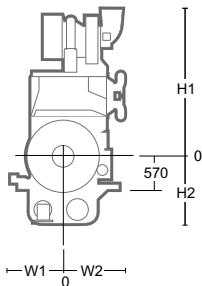
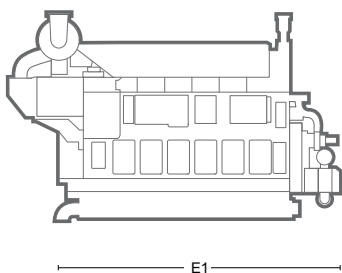
Fixed Pitch Propeller

Guarantee optimum thrust, minimal noise and vibration level.

Dimensions

750 rpm	cyl.	Rated Output at Engine (kW)	Engine dimension (mm) & dry weight (ton)					Dry Weight
			E1	H1	H2	W1	W2	
	6	3,600	5,942	2,505	1,000	1,318	1,610	47.0
	7	4,200	6,452	2,505	1,000	1,318	1,610	51.0
	8	4,800	6,962	2,659	1,000	1,318	1,713	55.0
	9	5,400	7,472	2,659	1,000	1,318	1,713	59.0

E1 : Dimension between eng. flywheel to eng. free end.



Marine Propulsion System

Tier II, Tier III (with SCR)

H32CP

Specific Fuel Oil Consumption

Load	750 rpm
SFOC at 100% MCR	180 g/kWh
SFOC at 85% MCR	176.2 g/kWh

*) Note :

- 1) Reference condition based on ISO 3046/1
- 2) Fuel oil based on LCV(Lower Calorific Value) 42,700kJ/kg
- 3) Tolerance +5% and without engine driven pumps
- 4) NOx Emission limitation : IMO Tier II

#) Based on the CPP Constant speed operation (For FPP : Please contact us)

Specific Lubricating Oil Consumption

Lub. Oil: 0.5 g/kWh

Application

- Controllable pitch propulsion
- Fixed pitch propulsion
- Azimuth thruster propulsion
- Pump drive



SOAR POWER GROUP
[Http://www.soarpower.com](http://www.soarpower.com)
E-mail: sale@soarpower.com
Hotline: +86-4008111308